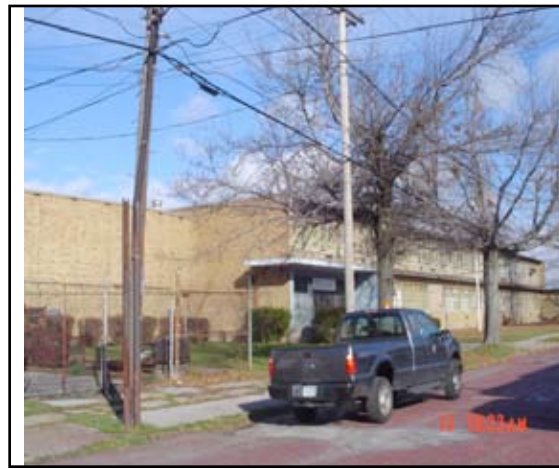




**725 HUMBOLDT**  
 3 story, brick,  
 partial basement,  
 former school  
 12,573 GFA  
 Lot Size -  
 126 x 140  
 ZONING : R2  
 Hamlin Park  
 Sale by Appraisal



**82 HARRISON**  
 Former School 26  
 Lot Size: 330'x 250'  
 Building #1:  
 8,483 Sq. Ft.  
 Built 1952  
 One story brick  
 Building #2:  
 36,161 Sq. Ft.  
 Built 1952  
 Two story brick  
 General condition  
 - Good  
 Boiler system intact  
 ZONING: R2  
 Sale by Appraisal



**2969-2971 BAILEY**  
 2 buildings: 2.5 story,  
 row type office build-  
 ing, slab basement,  
 wood/brick exterior; 2  
 story, brick slab base-  
 ment, 2,175 and  
 3,480 sq. GFA  
 Lot Size -  
 2969 Bailey - 30x108,  
 2971 Bailey - 29 x 83  
 ZONING: Ken Bailey  
 Special District  
 Sale by Appraisal



**769 - 781 BEST**  
 4 story, brick and  
 masonry, former  
 School #59,  
 39,390 GFA  
 Lot Size - 217  
 x Irr. adjoining  
 parking lot  
 ZONING: R2  
 BROADWAY /  
 FILLMORE  
 NDP  
 Sale by Appraisal



**395 AMHERST**  
 2 story,  
 unfinished  
 basement,  
 former  
 firehouse -  
 6,379 GFA  
 Lot Size -  
 38 x 150  
 ZONING: C2  
 Sale by Appraisal  
 sale pending



**1659 AMHERST**  
 1 story, 2 building  
 former library,  
 partially finished  
 basement  
 6,338 GFA  
 Lot Size -  
 122 x 138  
 ZONING: R2  
 Sale by Appraisal



**275-279 KEHR**  
 and adjoining  
**549 WINSLOW**  
 2 story brick,  
 unfinished  
 basement,  
 former fire house  
 4,823 GFA  
 Lot Size -  
 Kehr - 80 x 120  
 Winslow - 30 x  
 120  
 ZONING: R2  
 Sale by Appraisal



**238 ONTARIO**  
 4 story, brick  
 with block  
 backup, pier/slab  
 basement, former  
 School #60  
 90,289 GFA  
 Lot Size  
 140 x 371  
 ZONING: C1  
 Sale by Appraisal  
 Sale Pending



**91 LISBON**  
 Former School 63  
 Lot Size: 286 x320  
 Zoning: R-2  
 Two stories  
 42,466 GFA  
 Unfinished basement  
 Built 1930  
 Sale by Appraisal



**57 HOWARD**  
 3 story, precast concrete panel, pier/slab basement, former school  
 94,952 GFA  
 Lot Size 218 x 303  
 ZONING: R2  
 Emslie NDP  
 Sale by Appraisal



**243 SEARS**  
 3 story, brick with block backup, crawl basement, former School #57  
 30,539 GFA  
 Lot Size 300 x Irr.  
 ZONING: R2  
 BROADWAY/  
 FILLMORE  
 NDP  
 Sale by Appraisal



**190 FULTON**  
 2 story former school  
 33,156 GFA  
 Lot size 330 x 111  
 ZONING: R3  
 Sale by Appraisal



**1086 BROADWAY**  
 1 story, brick, former library, unfinished basement, airconditioning  
 7,379 sq. GFA  
 Lot Size 84 x 170  
 ZONING: C2  
 BROADWAY / FILLMORE  
 NDP  
 Sale by Appraisal



**124 MARYLAND**  
 1 Story  
 Former Health Care Facility  
 8897 Sq. Ft.  
 Lot Size 113' x 117'  
 ZONING: C1  
 Sale by Appraisal



**2351 DELAWARE**  
 Former North Park Library  
 Lot Size 123 x 149  
 Zoning: C-2  
 3,980 Sq. ft.  
 1 Story,  
 Partially finished basement  
 Built 1925  
 Sale by Appraisal



**40 DAYS PARK**  
 Former School 36  
 Lot Size 385 x 126  
 Zoning: R-3;  
 Allentown Historic District  
 36,025 GFA  
 2 Stories  
 Built 1990  
 Sale by Appraisal



**1532 GENESEE**

2 stories, Brick,  
Downtown row  
type bldg  
Former Substance  
Abuse clinic  
Lot size 119 x159  
Basement  
unfinished  
Gross Floor Area  
2,417  
Year built 1920  
Zoning C-2



**326 HIGH**

2 stories, Former  
Community  
Center with Office,  
storage and  
external apt  
Lot size 51 x 120  
w/ 15x25 NE  
corner piece  
Basement  
unfinished  
Gross Floor Area  
8,618  
Yr built 1900  
Zoning C-1;  
Fruitbelt URA